

Limestone  
Calcined  
Clay  
Cement



LOW CARBON



LOW COST



LOW CAPITAL



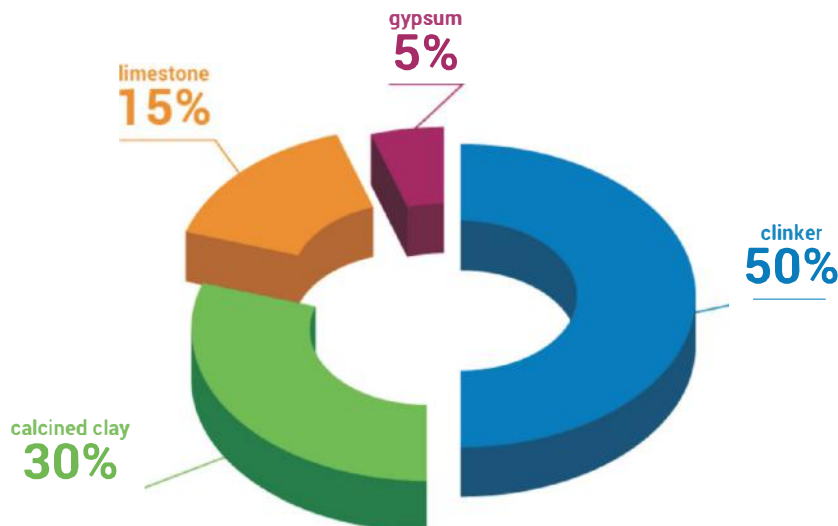
HIGH PERFORMANCE

---

[www.lc3.ch](http://www.lc3.ch)

## What is LC<sup>3</sup>?

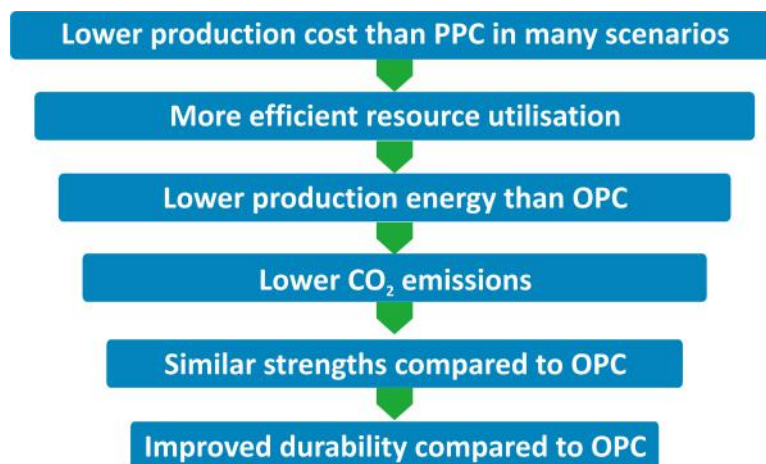
LC<sup>3</sup> cements are a family of composite cements containing portland clinker, calcined clay and limestone. The LC<sup>3</sup> technology promises a sustainable growth of economies around the world by reducing CO<sub>2</sub> emissions by more than 30% compared to plain portland cement at lower production costs. As LC<sup>3</sup> cements use raw materials and technologies that are already commonly used in cements and can be used in the same way as normal cements, they provide a practically viable solution to improve sustainability.



*Typical composition of an LC<sup>3</sup> cement*

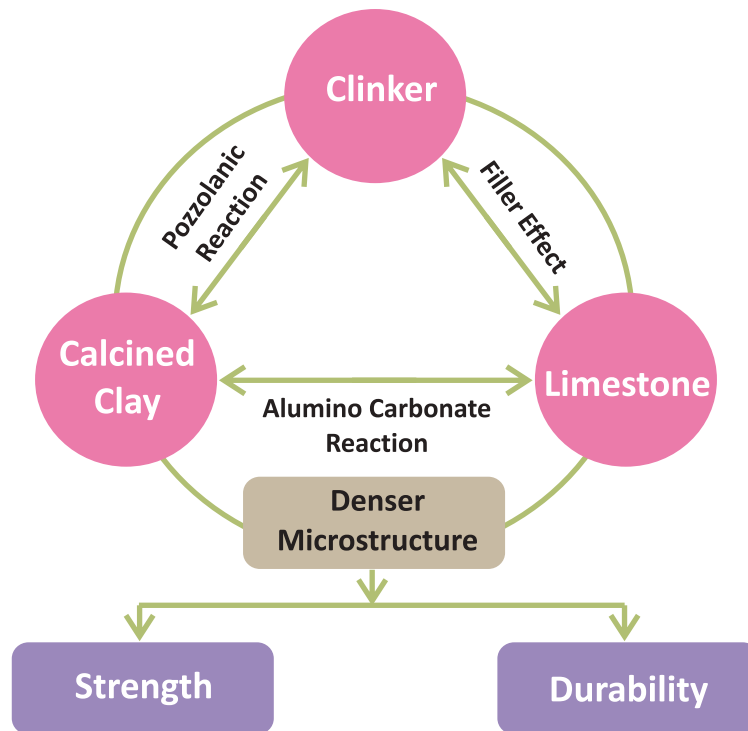
## Advantages of LC<sup>3</sup> technology

Due to the lower clinker content, the LC<sup>3</sup> technology has several advantages over ordinary portland cement (OPC) and fly ash based portland pozzolanic cement (PPC). The main advantages will be:



## Synergy in LC<sup>3</sup> cements

LC<sup>3</sup> works on the synergy between clinker, calcined clay and limestone phases. Calcined clay reacts with hydration products of clinker and limestone reacts with calcined clay, giving phases that make the microstructure denser. Calcined clays have been long used as pozzolanic materials in cements and limestone is an established semi-reactive filler in cements. The added synergy from the reaction of calcined clays with limestone producing carboaluminate phases improves the strength and durability of the cement.



## Raw materials for LC<sup>3</sup>

Normal portland clinker is used in the production of LC<sup>3</sup>. Clinkers and OPCs from all around India have already been tested in LC<sup>3</sup> blends. Clays containing 40% to 70% kaolinite are ideal for the production of LC<sup>3</sup>. Such clays are abundantly available as waste in mines where higher grade clays are used for high value applications. The clays are calcined at 750°C to 850°C to make them reactive. Calcination requires less than half the energy required for clinker production. Limestones with as little as 65% carbonate content can be used. Such low grade limestones are often rejected in cement plant mines. Limestones with impurities such as quartz and dolomite can be consumed in LC<sup>3</sup>. No calcination of the limestone is required. Waste materials from marble and kota stone production can be used in place of limestone.

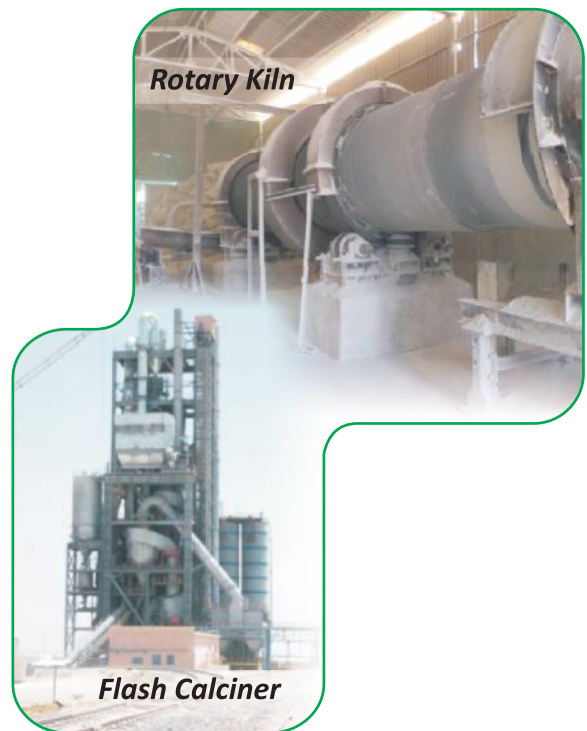


*Locations with availability of suitable clays in India*

## Composition and production of LC<sup>3</sup>

Typical LC<sup>3</sup> cements contain 40% to 65% clinker by weight. The remaining LC<sup>3</sup> cement contains 30% to 38% calcined clay, 15% to 20% of crushed limestone and 3% to 7% of gypsum. The calcination of clays can be carried out using rotary kilns. Due to lower temperatures and lower energy, the capital investment required for these rotary kilns is likely to be less than that of cement kilns of the same capacity. Flash calcination and fluidised bed reactor technologies can also be used for the calcination of clays. Flash calciners are similar to preheaters commonly used in cement plants.

LC<sup>3</sup> can be produced in a similar manner as OPC and PPC by intergrinding or blending. The softer nature of the materials reduces grinding energy, although, as is the case with many composite cements, separate grinding may be desirable. Ball mills, vertical roller mills or presses can be used for grinding.



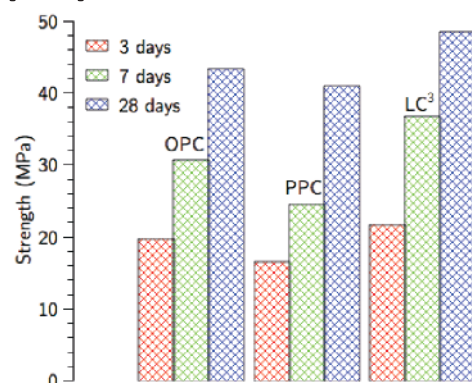
## Characterisation of raw materials and LC<sup>3</sup> cement

The suitability of clays and limestones required for the production of LC<sup>3</sup> can be easily characterised using loss on ignition, thermogravimetric analysis or X-ray diffraction techniques. These techniques are available in most cement plants and are routinely used to characterise other cements. Existing standard test methods can also be used to identify suitable combinations of clays and limestones.

Once produced, quality control of LC<sup>3</sup> can be easily carried out by measuring strength and other methods used for OPC and PPC.

## Mechanical and other physical properties of LC<sup>3</sup>

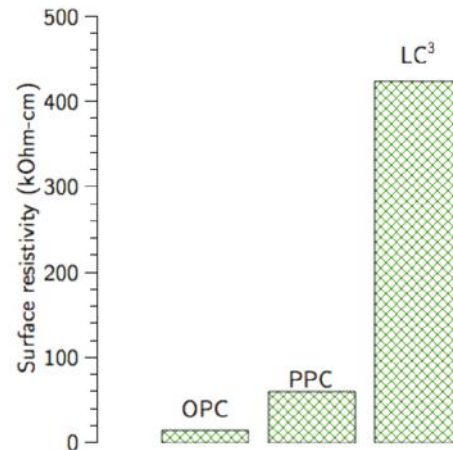
LC<sup>3</sup> has been seen to develop ultimate strengths comparable to OPCs produced using the same clinker. Strength development in LC<sup>3</sup> has generally been observed to be faster than OPC and PPC. LC<sup>3</sup> cements are expected to satisfy all the other requirements of physical characteristics laid down in the Indian standards.



*A comparison of OPC, PPC and LC<sup>3</sup> produced using the same clinker and the same process*

## Durability of LC<sup>3</sup>

Under most severe conditions, the performance of LC<sup>3</sup> was found to be better than or at par with OPC and PPC. LC<sup>3</sup> has a high chloride penetration resistance and produces a dense microstructure with high resistivity making it ideal for harsh conditions like in marine environment. LC<sup>3</sup> is also highly suitable for use with reactive aggregates.



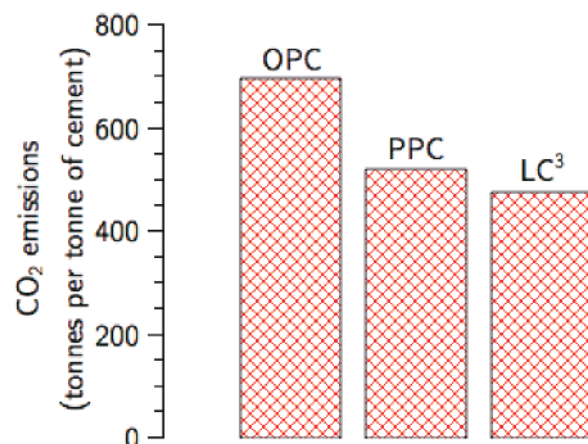
*The surface resistivity of LC<sup>3</sup> concretes was found to be an order of magnitude higher than OPC and PPC concretes*

## Economy of LC<sup>3</sup>

Due to the lower calcination requirements, LC<sup>3</sup> is more economical to produce than OPC for similar performance. Especially at locations with shortage of high quality fly ash, LC<sup>3</sup> is more economical to produce than PPC. Due to its lower clinker content and lower capital investment required for calcination of clays, LC<sup>3</sup> allows higher returns on capital investments.

## Emissions and resource efficiency from LC<sup>3</sup>

The production of LC<sup>3</sup> emits as much as 30% less CO<sub>2</sub> than OPC and 11% less CO<sub>2</sub> than PPC. The energy consumed in producing LC<sup>3</sup> is also significantly lower than OPC and even lower than PPC in many scenarios. LC<sup>3</sup> also offers an interesting solution for the utilisation of low grade mine rejects widely available with the cement industry.



*A comparison of CO<sub>2</sub> emissions for production of different cements at one plant in India*



## Field and laboratory experience with LC<sup>3</sup>

Almost 170 tonnes of LC<sup>3</sup> has been produced in India. A detailed research and development programme has been put in place to understand all important aspects of this cement. Pilot construction projects have been executed to obtain field data on the performance of LC<sup>3</sup> as a general use cement.



The LC<sup>3</sup> building in Jhansi built using the first batches of LC<sup>3</sup> produced in Jhansi



The SDC building at the Swiss Embassy in Delhi having AAC blocks made of LC<sup>3</sup>



Blocks produced in an automated unit using LC<sup>3</sup> in Ghaziabad



A worker demoulding LC<sup>3</sup> kerb-stones in Jhansi



A house made of LC<sup>3</sup> in Cuba

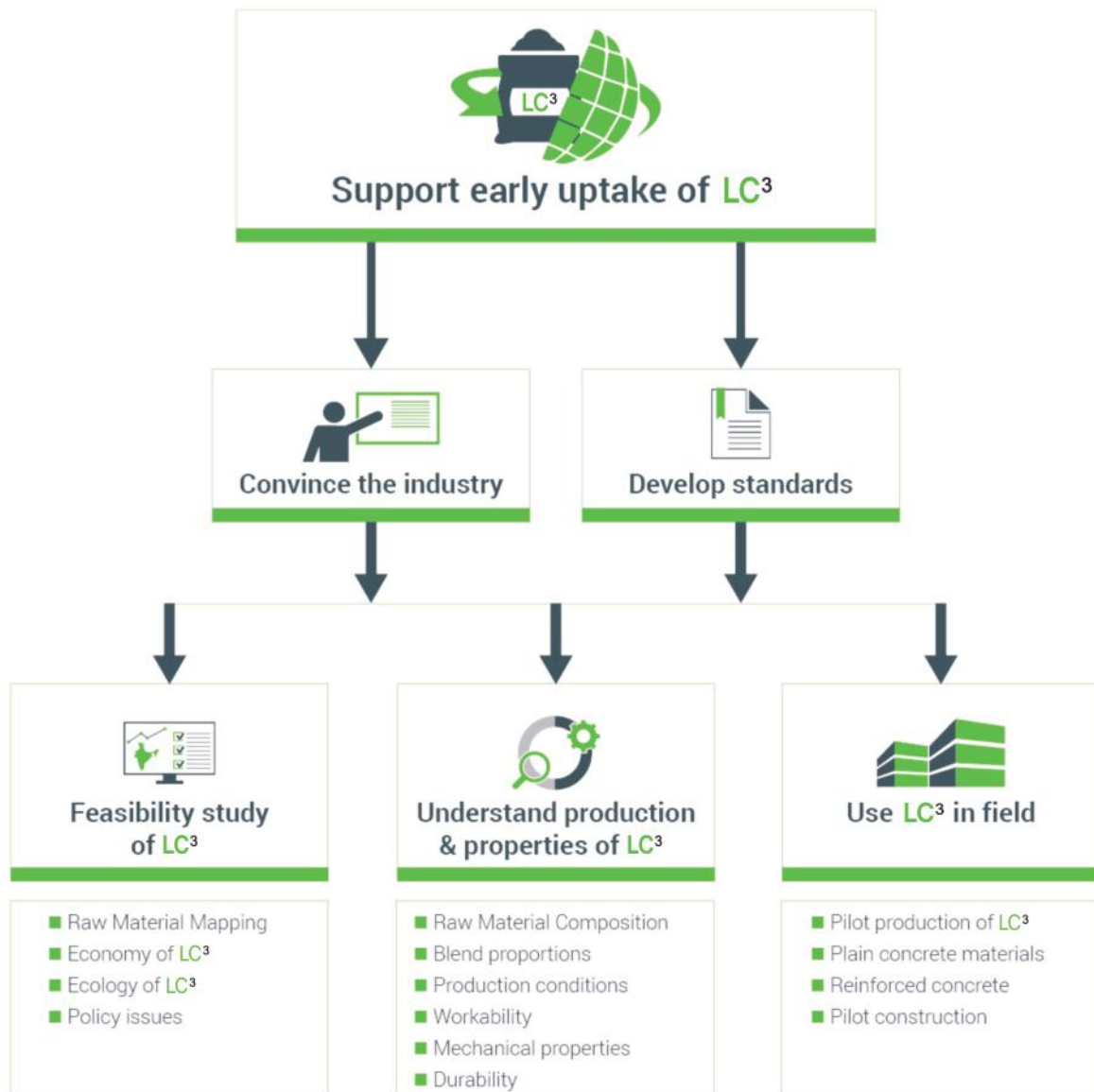


Road segments made using LC<sup>3</sup> in Chennai

## Challenges with LC<sup>3</sup>

Significant effort is needed to establish LC<sup>3</sup> as a viable alternative for the cement industry. The mapping of resources, establishment of test methods and performance criteria and the estimation of commercial viability and environmental impact of LC<sup>3</sup> in various scenarios is essential. It is most important to develop standards for LC<sup>3</sup> that will be accepted by the Bureau of Indian Standards, allowing its commercial production. For this, a vast amount of laboratory and field data, verified by government bodies, the cement industry and the construction industry, has to be generated. This project aims to accelerate the uptake of LC<sup>3</sup> through a focused, mission-mode generation of this data.

LC<sup>3</sup> is expected to be a general use cement for structural and non-structural applications. Like all cements, it is expected to perform well under many conditions. The data generated in this project will allow designers to use LC<sup>3</sup> safely and efficiently.



*The objectives and the key aspects to be studied in the LC<sup>3</sup> project*

## The LC<sup>3</sup> Team



Schweizerische Eidgenossenschaft  
Confédération suisse  
Confederazione Svizzera  
Confederaziun svizra

**Swiss Agency for Development  
and Cooperation SDC**

### LC<sup>3</sup> Project Office

EPFL STI IMX LMC MXG 233  
Station 12, CH-1015 Lausanne  
Switzerland

#### Contact:

Robert Fielding  
Email: robert.fielding@epfl.ch

### IIT Delhi

Department of Civil Engineering  
Hauz Khas  
New Delhi 110016, India

#### Contact:

Shashank Bishnoi  
Email: shashank.bishnoi@civil.iitd.ac.in

### TARA

B-32, Tara Crescent,  
Qutub Institutional Area,  
New Delhi 110016, India

#### Contact:

Soumen Maity  
Email: smaity@deval.t.org